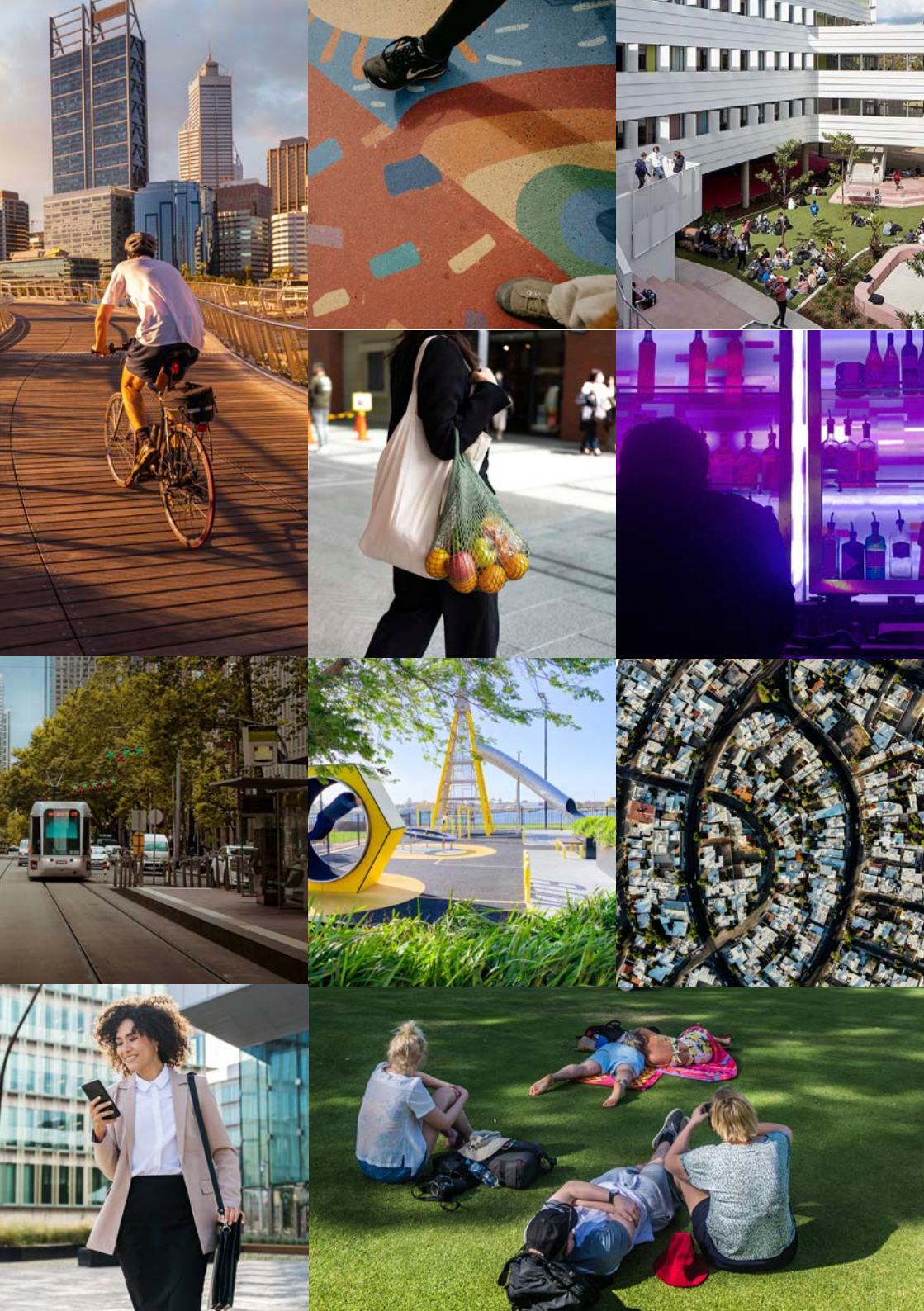




**Invest in
liveability,
Lead with
insight.**

The Australian
Urban Observatory
translates complex
urban informatics into
actionable insight,
so councils, planners,
and communities can
build cities that work
for everyone.

Turn liveability data into real-world change.



What is the AUO?

A **ground-breaking digital liveability planning platform**, built on leading research to make **complex urban data** effortless to access, explore and interpret.

Delivering sophisticated urban data, transformed into intuitive, easy-to-understand liveability indicators for Australia's major cities. The Australian Urban Observatory maps and analyses liveability at the Local Government Area, suburb and neighbourhood level—providing clear, actionable insights across 21 cities nationwide.

Access to over 70 liveability indicators across nine domains of liveability.

Measuring, monitoring and comparing liveability for 2018, 2021 and 2024.

Resources, scorecards and tools to support and enhance liveability planning.

Access to the AUO community of practitioners and decision-makers



Liveability Index



Walkability



Social Infrastructure



Food



Alcohol



Transport



Public Open Space



Housing



Employment



People

Why it matters and how it works

WHEN CITY GROWTH OUTRUNS LIVEABILITY

80% of Australians live in cities but not all suburbs and neighbourhoods are liveable with cities growing faster than effective policy and planning can be developed.

LIVEABILITY INSIGHTS MADE SIMPLE

Providing immediate access to years of transdisciplinary research knowledge made available through easy to understand liveability indicators using a customised and interactive digital portal.

A SMARTER WAY TO PLAN FOR LIVEABILITY

A custom designed digital platform created for decision-makers to make identifying priorities and designing liveable places easier to do, saving money, time and people resources.

UNDERSTANDING LOCAL LIVEABILITY

Providing neighbourhood and suburb level liveability analysis to see what factors are contributing to liveability strengths and weaknesses across 40,000 neighbourhoods of Australia

Policymakers need access to research evidence today.



Who will benefit from the AUO?



PLANNERS & POLICYMAKERS

seeking detailed liveability insights for neighbourhoods shaping the development of cities, and guide community health and policy.



DEVELOPERS & CONSULTANTS

looking for site selection (for future development) and to align their projects with social impact or Environmental, Social and Governance (ESG) goals.



EDUCATORS, STUDENTS & JOURNALISTS

aiming to explore liveability concepts, understand disparities across regions, and leverage research-based visual data.



ADVOCATES & RESEARCHERS

using AUO's indicators to support public health planning, monitor progress, guide goal-setting, and foster cross-sector collaboration.

How it is used

The AUO makes **significant impact** through:

GOVERNMENT COLLABORATION

Local, state and federal bodies utilise AUO data for public health planning, strategic urban development, monitoring, evaluation, evidence to support decision-making, storytelling, education and advocacy.

INDUSTRY PARTNERSHIP

Stockland, Australia's largest diversified property group, integrates AUO liveability indicators into its social impact planning and community design, enabling evidence-based and socially responsible development.

SPECIALISED PROJECTS

Tools and resources - City Scorecards, Growth Areas Scorecards, LGA scorecards, THAT Melb, Liveability teaching resources, guidance notes, Planning for Liveability Toolkit.

Unique digital capabilities including interactive and iterative partner-informed design, walking catchment analysis, comparison maps, downloadable visual results summaries, demographic profiling, CSV data downloads, school locations.

ALIGNMENT WITH UN SUSTAINABLE DEVELOPMENT GOALS (SDGs)

The AUO supports key SDGs, including sustainable cities (SDG 11), health and wellbeing (SDG 3), reducing inequalities (SDG 10), climate action (SDG 13), and partnership (SDG 17) by enabling observation, collaboration, and evidence-based policy. The AUO is also a member of the UN Habitat Global Urban Observatories Network.



Research Partnership advantage

Become a paid **Research Partner** and use the **AUO** to:



Access exclusive AUO neighbourhood liveability data and research insights.



Understand liveability trends via clear indicators and mapping.



Inform engagement, planning, and decision-making.



Complement alternate data sources eg: place-score



Equip stakeholders with evidence-based insights.



Set improvement targets and monitor progress.



Strengthen advocacy with credible research.



Share data to support integrated planning across departments and communities.



Identify infrastructure investment priorities.



Provide evidence for funding applications and submissions.



Align outcomes with ESG (Environment, Social, Governance) goals.



Build business cases and select future project sites.

How we compare



UNIQUE COMPETITIVE ADVANTAGE

No other Australian platform offers nationwide, neighbourhood-level, multi-year liveability insights with this level of clarity, usability and policy relevance.



PROVEN TRACK RECORD OF HIGH-IMPACT PROJECTS

The AUO is trusted by all levels of government, major developers, NGOs, educators and researchers to evaluate, plan and advocate. It powers initiatives that advance real-community impact.



FLEXIBLE, SCALABLE ACCESS MODELS

Tailored partnerships, at either LGA, State, or National level with 12-month interactive access and expansion capability as needs/regions grow, making the AUO cost-effective and adaptable.



COLLABORATIVE & EVOLVING PLATFORM BASED ON PARTNER FEEDBACK

The AUO does not sit still; new liveability indicators and platform features are released as research knowledge expands and partner needs are responded to which ensures the platform stays relevant and responsive to changing needs.

Partner with us today!

Contact us to book a demo
auo@rmit.edu.au

