

Measuring and  
monitoring the  
liveability of  
Growth Areas in  
Australian Capital  
Cities

# Growth Areas Liveability Scorecard for Sydney

 Australian  
Urban  
Observatory

 NATIONAL  
Growth Areas  
ALLIANCE  
NGAA

## Acknowledgements

This work is licensed under CC BY-ND 4.0 and is free to share and redistribute the material but must give appropriate attribution and credit. Any maps reproduced as part of this project must include attribution and citation.

Davern, M., Both, A., Gudes, O., Papaix, B., Roberts, R. & Rivera Villicana, J. Measuring and monitoring the liveability of Growth Areas in Australian Capital Cities: Growth Areas Liveability Scorecard for Sydney. Australian Urban Observatory, RMIT University, Melbourne.

<https://doi.org/10.25439/rmt.27823929>.

**Enquiries regarding this report may be directed to:**

auo@rmit.edu.au  
RMIT University City campus  
124 La Trobe Street  
Melbourne VIC, 3000  
Australia

**Detailed Liveability Indicator data and maps can be accessed through the Australian Urban Observatory**

W [auo.org.au](http://auo.org.au)

# About this report

This report is the first series of Growth Areas Liveability Scorecard Reports developed in partnership with the National Growth Areas Alliance. The Growth Area Liveability Scorecards have been developed for the capital cities of Adelaide, Brisbane, Melbourne, Sydney and Perth include indicators and maps from the Australian Urban Observatory measuring the liveability of 21 Australian cities. The Scorecards focus on the fastest growing Local Government Areas located in outer metropolitan and peri-urban regions of Australia's five largest capital cities. The Growth Area Liveability Scorecards identify differences between Growth Areas and Non-Growth Areas across Australian capital cities. Results are based on previous City Liveability Scorecards developed by the Australian Urban Observatory @ RMIT University and are based on 2021 indicator results.

**More detailed neighbourhood, suburb, and Local Government Area results across Australian cities are available online at [auo.org.au](http://auo.org.au).**



Liveability Index



Housing  
Affordability



Walkability for  
Transport Index



Frequent Public  
Transport  
Accessibility



Public Open  
Space



Social  
Infrastructure  
Index



Health  
Infrastructure



Cultural  
Infrastructure



Education  
Infrastructure



Community  
and Sport  
Infrastructure



# Liveability Index

## Rationale

The economic, social, environmental, and health co-benefits of urban liveability are recognised by all levels of government in Australia and internationally. Liveable communities are safe, socially cohesive and inclusive, and environmentally sustainable. They have affordable housing linked via public transport, walking and cycling infrastructure, to employment, education, shops and services, public open space, and social, cultural, and recreational opportunities.

## What we measured

The Liveability Index is underpinned by over a decade of research. It combines six domains of liveability found to be associated with health and wellbeing outcomes: walkability; access to social infrastructure; public transport; larger public open space; affordable housing; and local employment.

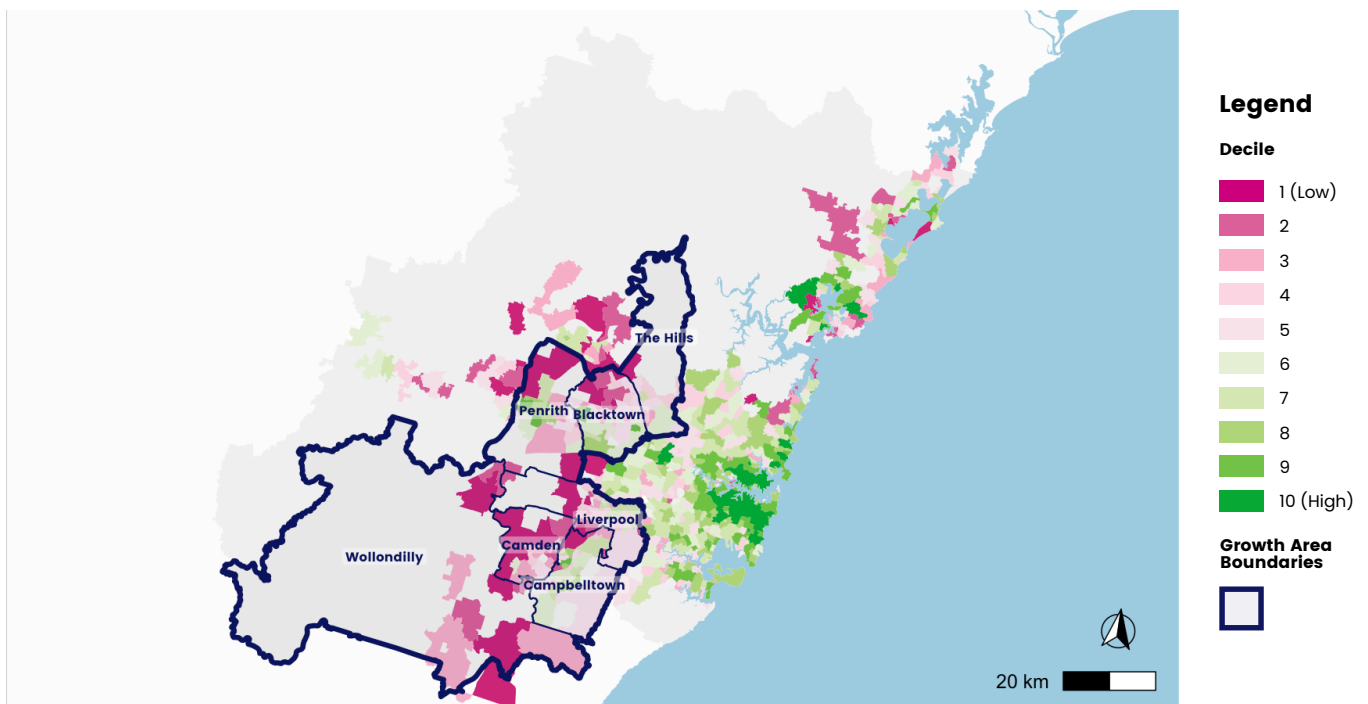


The Liveability Index score for residences in Growth Areas of Sydney is

97.

This Liveability Index score is lower than the Sydney city average of 100 and the non-growth areas of Sydney where the average is 101.

Figure 1. Liveability Index for Sydney at suburb level highlighting Growth Area Local Government Areas.





# Social Infrastructure Index

## Rationale

Social infrastructure provides access to essential community services and resources. Access to a wide range of different types of social infrastructure is important for the creation and ongoing development of healthy communities. High levels of access to social infrastructure are linked to increased physical activity, wellbeing, and satisfaction with the local community, improving social interactions and mental health outcomes.

## What we measured

The Social Infrastructure Index includes access to 16 types of social infrastructure at various recommended distances from dwellings. It includes access to childcare facilities, community centres, libraries, aged care facilities, pharmacies, family and community healthcare, dentists and general practitioners, sporting facilities, swimming pools, outside school hours childcare, primary and secondary schools, museums or galleries, and cinemas and theatres.

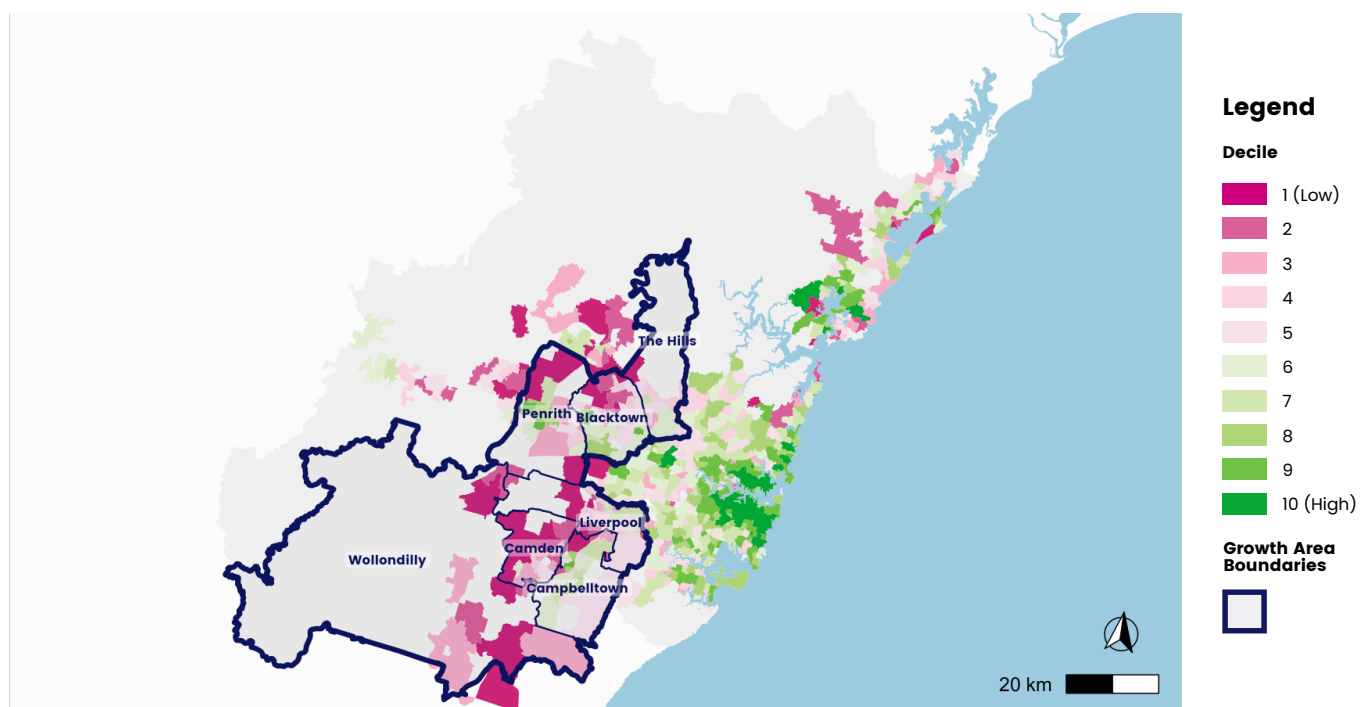


The Social Infrastructure Index score for residences in Growth Areas of Sydney is

4 out of a total of 16.

This score is lower than the Sydney city average of 6 and the non-growth areas average of 7.

Figure 2. Social Infrastructure Index for Sydney at suburb level highlighting Growth Area Local Government Areas.





# Health Infrastructure

## Rationale

Health infrastructure describes services related to health included within social infrastructure. Access to health infrastructure is critical for ensuring community health and wellbeing. High-quality health services and infrastructure are essential for providing timely medical care, preventive health services and promoting overall public health.

## What we measured

Health Infrastructure is a sub-domain of the Social Infrastructure Index. Access was measured according to the proximity of dwellings to primary healthcare services, including aged care facilities, General Practitioners, dentists, pharmacies, maternal child and family health centres and community health centres within specified distances.

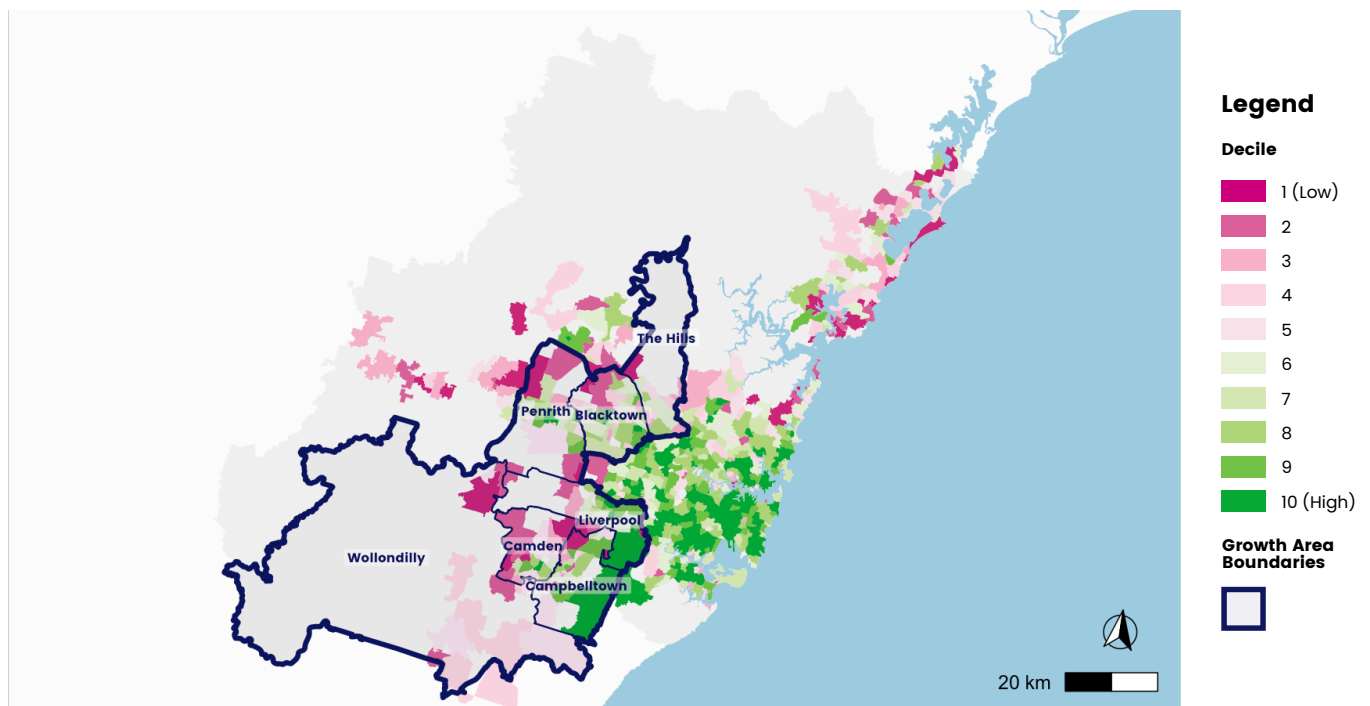


The Health Infrastructure score for residences in Growth Areas of Sydney is

1 out of a total of 6.

This score is lower than the Sydney city average of 2 and the non-growth areas average of 3.

Figure 3. Access to Health Infrastructure for Sydney at suburb level highlighting Growth Area Local Government Areas.





# Cultural Infrastructure

## Rationale

Cultural infrastructure describes services related to arts and culture that are included within social infrastructure. Cultural infrastructure plays an important role in fostering community cohesion, creativity, and cultural expression. Access to facilities such as museums, theatres, and galleries enhances the cultural fabric of a community, contributing to wellbeing, social cohesion, vibrancy and attractiveness.

## What we measured

Cultural Infrastructure is a sub-domain of the Social Infrastructure Index. Cultural infrastructure was measured according to the proximity of dwellings to key cultural assets including museums/art galleries, cinemas/theatres and libraries that provide residents with opportunities for cultural engagement.

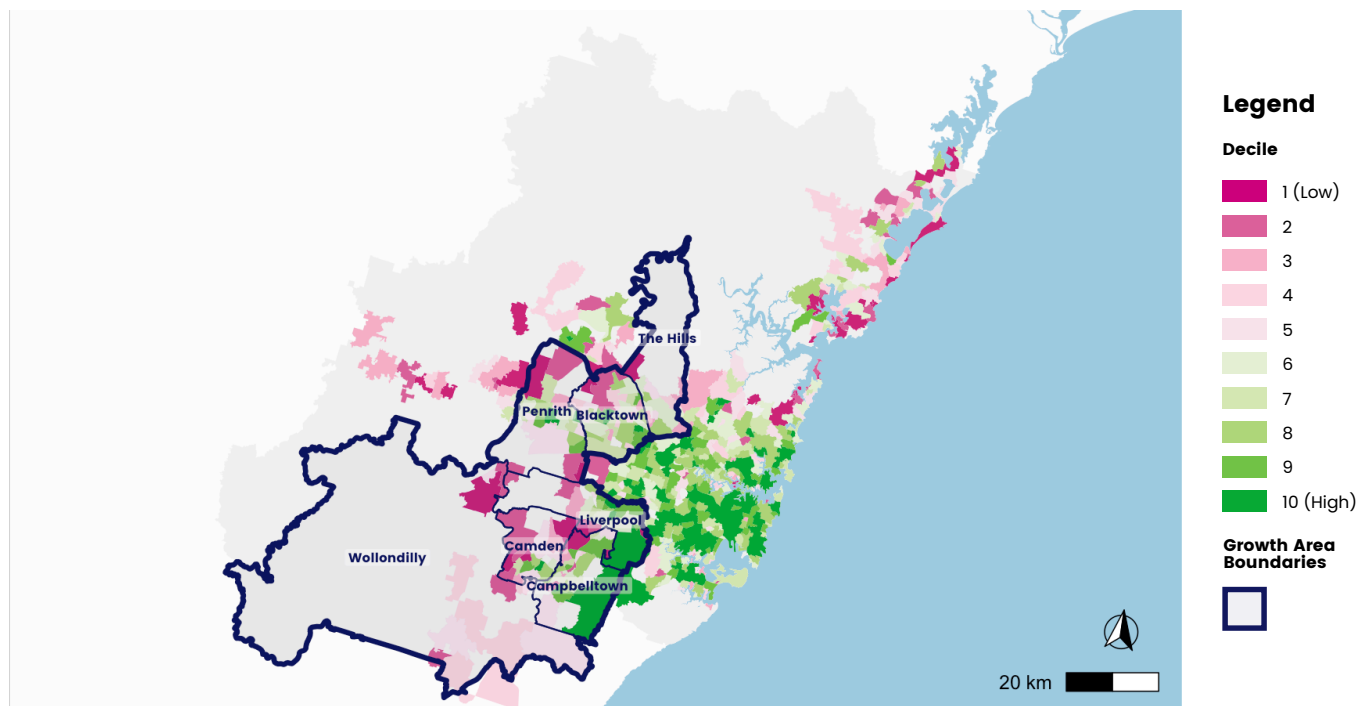


The Cultural Infrastructure score for residences in Growth Areas of Sydney is

0.4 out of a total of 3.

This score is lower than the Sydney city average of **0.9** and the non-growth areas average of **1**.

**Figure 4. Access to cultural and leisure infrastructure for Sydney at suburb level highlighting Growth Area Local Government Areas.**





# Education Infrastructure

## Rationale

Education infrastructure describes services related to education that are included within social infrastructure. Access to quality education infrastructure is fundamental to a thriving community and improved health outcomes. Schools, universities, and vocational training centres provide opportunities for learning and development, ensuring residents have access to education that can improve their quality of life and future social and economic prospects.

## What we measured

Education Infrastructure is a sub-domain of the Social Infrastructure Index. Education infrastructure was measured according to the proximity of dwellings to childcare, out of hours school care, Government primary schools and Government, secondary schools. Access was evaluated by calculating the percentage of dwellings within specified distances of these educational facilities.

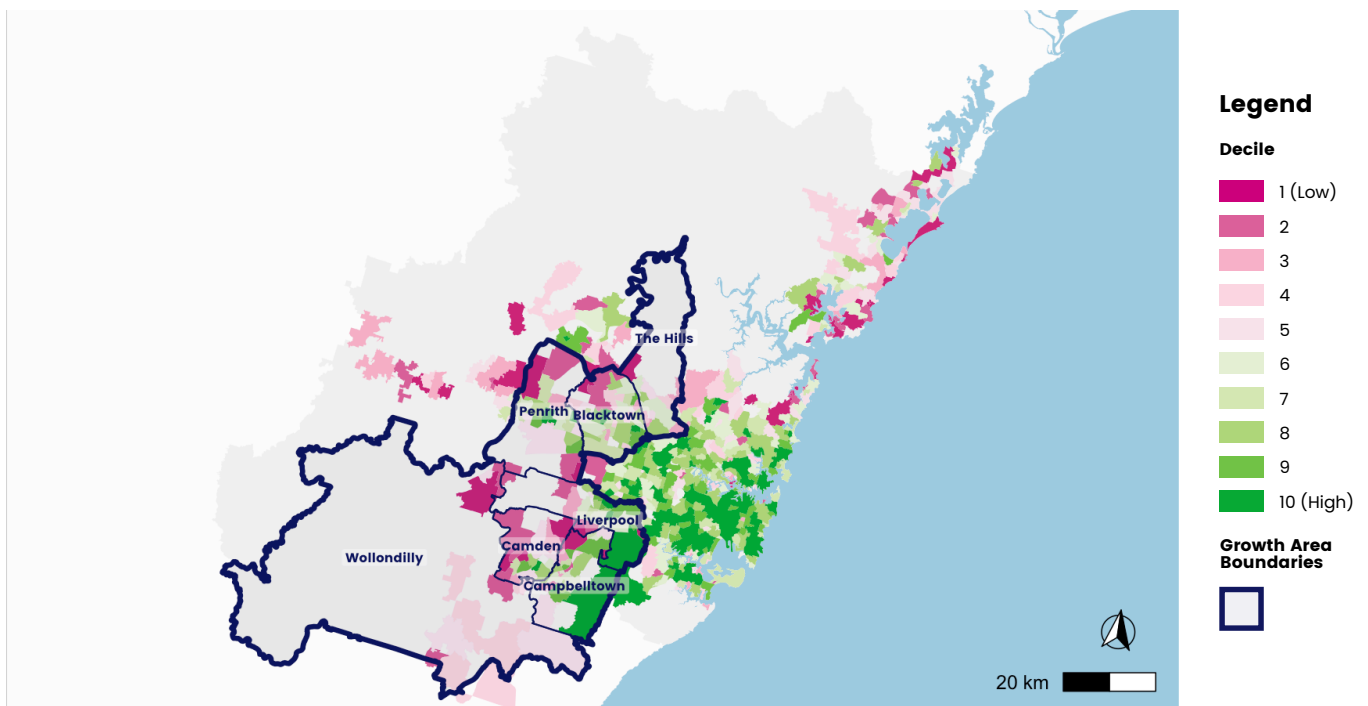


The Education Infrastructure score for residences in Growth Areas of Sydney is

# 2 out of a total of 4.

This score is lower than the Sydney city average of 2 and the non-growth areas average of 3.

Figure 5. Access to Education Infrastructure for Sydney at suburb level highlighting Growth Area Local Government Areas.







# Community and Sport Infrastructure

## Rationale

Community and Sport infrastructure describes specific community and sport infrastructure included within social infrastructure. Community and sport infrastructure, including community centres, sporting facilities, and parks, plays a key role in promoting social cohesion, physical and mental health and community wellbeing. Accessible community and sport infrastructure encourages social interaction and participation in recreation.

## What we measured

Community and Sport Infrastructure is a sub-domain of the Social Infrastructure Index. Access to community and sport infrastructure was measured based on proximity to community centres, public swimming pools and council supported recreation/leisure centres within recommended distances.

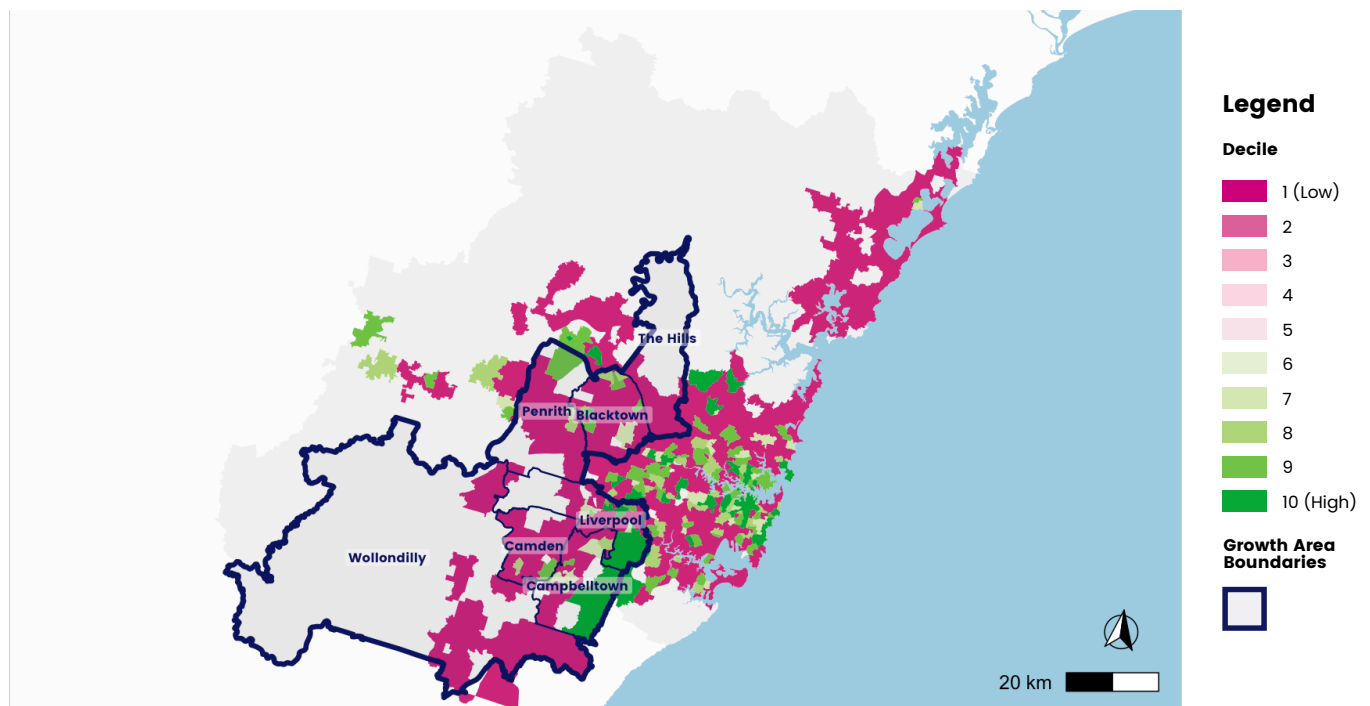


The Community and Sport Infrastructure score for residences in Growth Areas of Sydney is

0.1 out of a total of 3.

This score is lower than the Sydney city average of **0.3** and the non-growth areas average of **0.3**.

**Figure 6. Access to Community and Sport Infrastructure for Sydney at suburb level highlighting Growth Area Local Government Areas.**



Data: Australian Bureau of Statistics (ABS), 2021 under CC BY 4.0; OpenStreetMap, 2021 under ODbL; Map tiles: CartoDB, under CC BY 3.0, featuring data by OpenStreetMap, under ODbL.





# Walkability for Transport

## Rationale

Walkability measures the ease of walking for transport in an area. Neighbourhoods with shops and services to walk to, small blocks and good street connectivity, and higher population density tend to be more walkable. Walkable neighborhoods discourage driving, support social interaction and increase walking, cycling, and active transport use which improves levels of physical activity and reduces chronic disease outcomes.

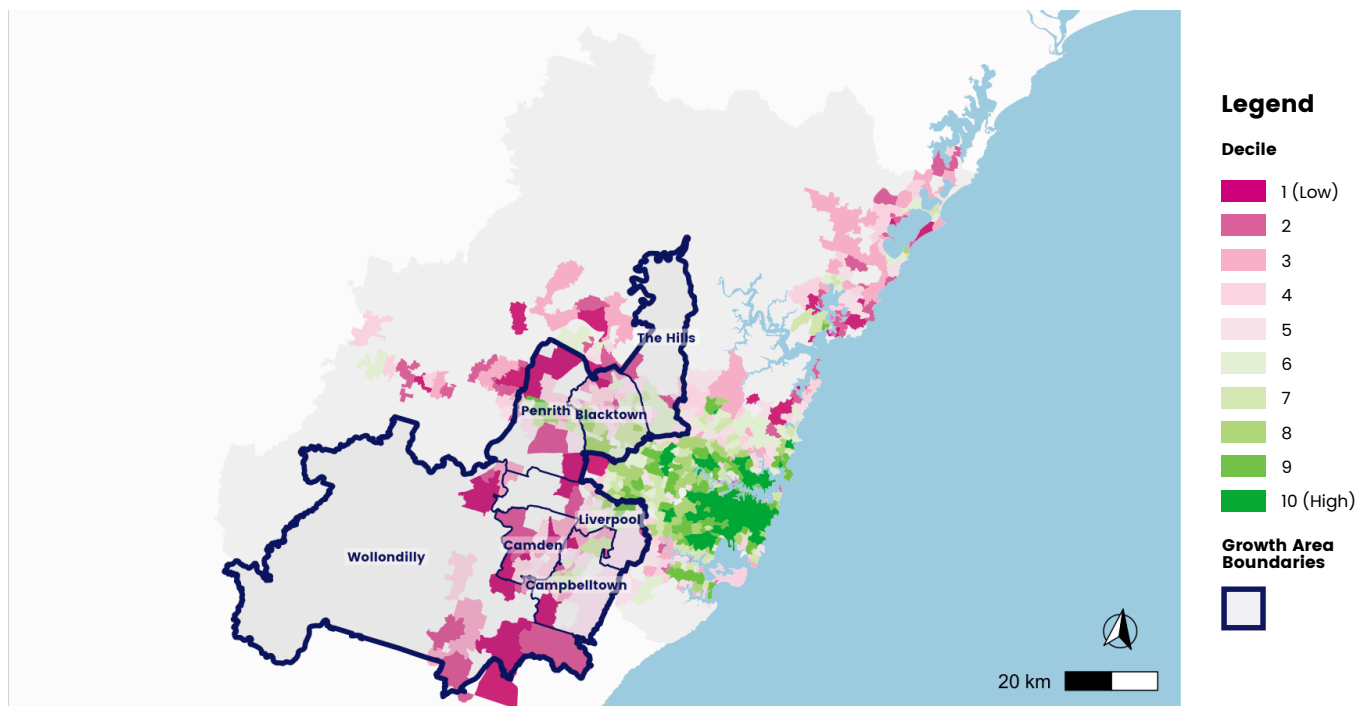
## What we measured

Walkability for Transport is calculated as a composite index that includes access to daily living destinations (something to walk to), dwelling density (population needed to supply services and destinations), and street connectivity (a way to get there) within a reasonable walking distance of home.



**Walkability for Transport is generally lower in most Growth Areas of Sydney which have lower density and fewer destinations to walk to, though there are some suburbs in Growth Areas with walkable areas. The map below reveals that inner areas of Sydney have the highest levels of walkability that encourage walking for transport, more daily physical activity and better health outcomes.**

**Figure 7. Walkability Index for Sydney at suburb level highlighting Growth Area Local Government Areas**





# Frequent Public Transport

## Rationale

Living close to public transport supports sustainability and health and wellbeing by encouraging walking, reducing dependence on driving private vehicles, and facilitates social connectivity with family and friends, employment, education and amenities. People who live close to public transport are more likely to use it and more likely to achieve the requirements of daily recommended physical activity.

## What we measured

We measured access to bus, train, and tram stops with an average service interval of no more than 30 minutes between the weekday hours of 7 am and 7 pm. Access was measured as the percentage of dwellings with a regular service within 400m of any of these stops based on a walkable road network distance.

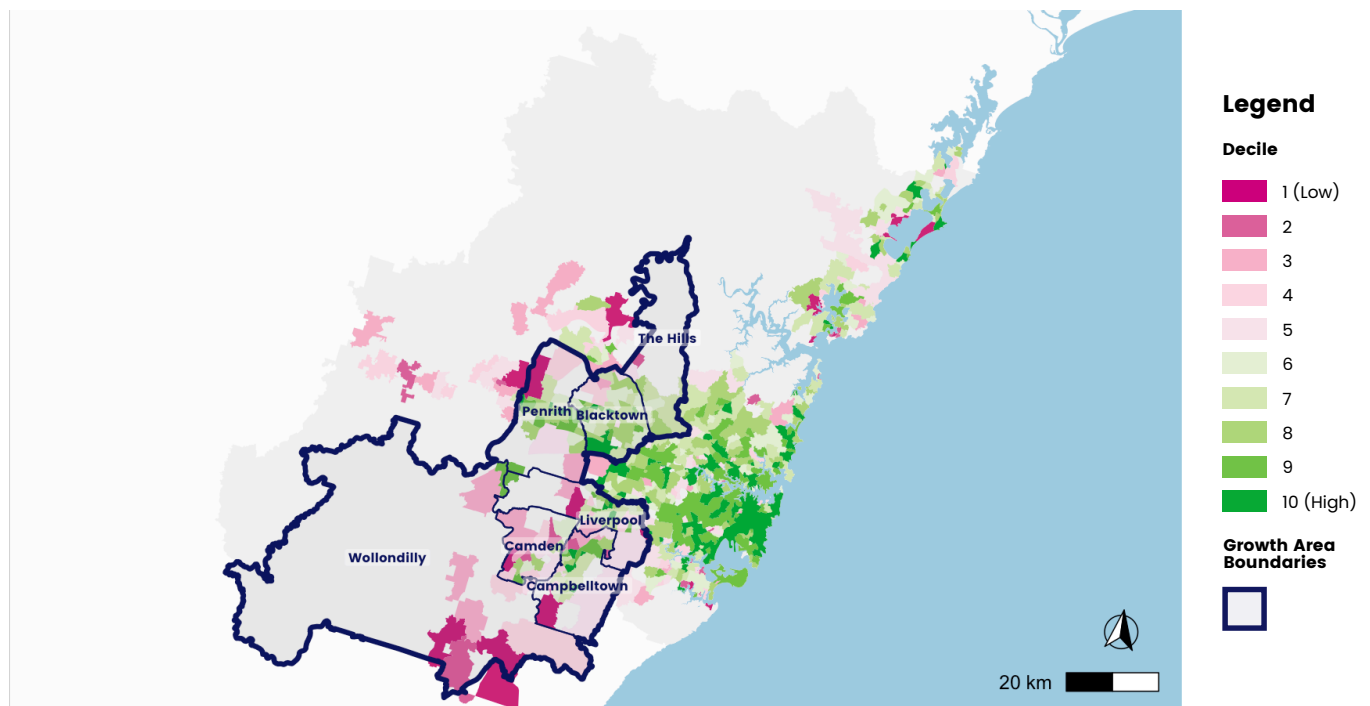


**The percentage of households in Growth Areas of Sydney with access to Regular Public Transport is**

**63%.**

**This is lower than the Sydney city average of 73% and the non-growth areas average of 77%.**

**Figure 8. Access to Frequent Public Transport within 400m across Sydney at suburb level highlighting Growth Area Local Government Areas.**



Data: Australian Bureau of Statistics (ABS), 2016 under CC by 4.0; OpenStreetMap, 2018 under ODbL; ActionBuses, Canberra Metro, MetroTas, NT Department of Infrastructure, Planning & Logistics, Public Transport Victoria, Transport for NSW, TransLink and Transperth, under CC by 4.0. Map tiles: CartoDB, under CC BY 3.0, featuring data by OpenStreetMap, under ODbL.





# Public Open Space

## Rationale

Public Open Space includes parks, open areas, and places where people can congregate for active and passive recreation and enjoyment. Public Open Spaces support both the physical and mental health of people living nearby. Green public open spaces also support ecosystems, ecology and biodiversity of an area and provide cooling effects mitigating urban heat island effects.

## What we measured

Large Public Open Space was defined as urban parks greater than or equal to 1.5 hectares, since larger parks have been shown to support physical activity. Access was measured as the percentage of dwellings within 400m based on a walkable road network distance.

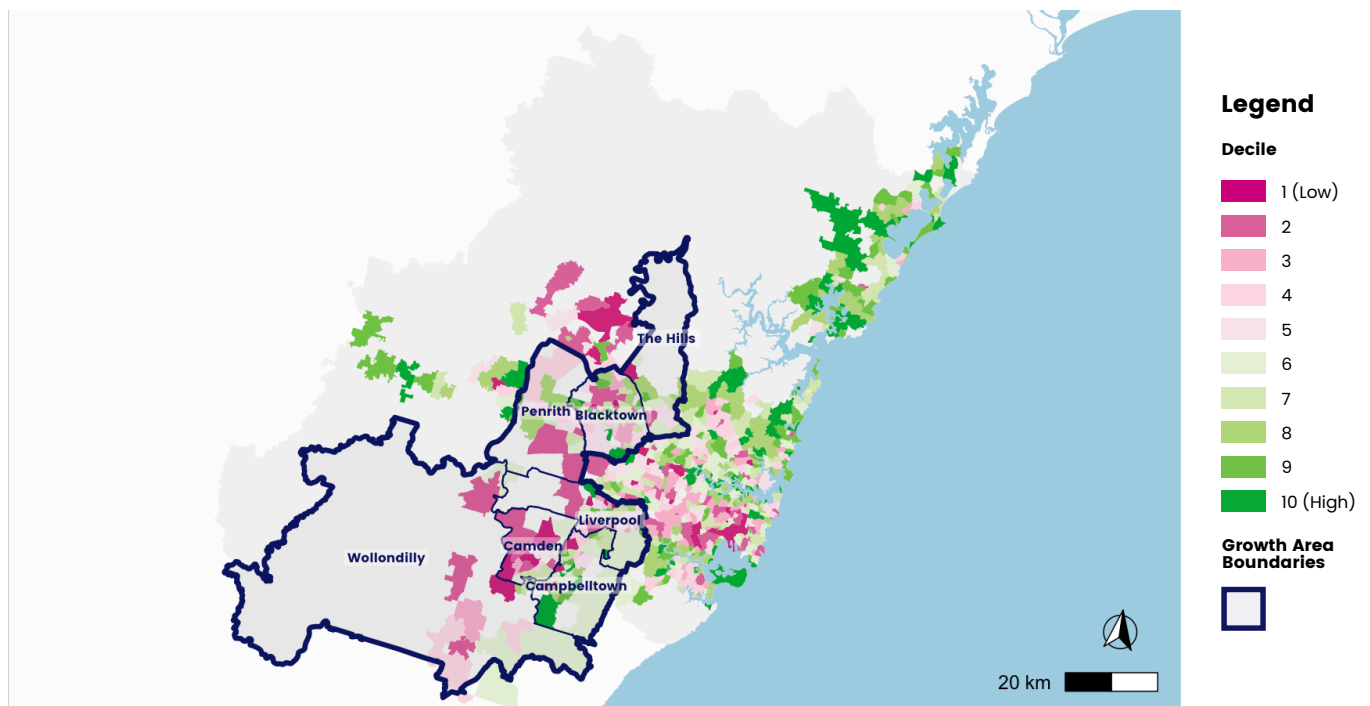


The percentage of households in Growth Areas of Sydney with access to Public Open Space is

40%.

This is similar to the Sydney city average of **41%** and higher than the non-growth areas average of **41%**.

Figure 9. Percentage of residences within 400m of Large Public Open Space across Sydney at suburb level highlighting Growth Area Local Government Areas.





# Housing Affordability

## Rationale

Decent and affordable housing supports families by providing safe, stable, and healthy shelter. Affordable housing frees up family finances for use on healthcare and food, and supports physical and mental health and wellbeing. Housing affordability stress is associated with poorer self-reported health, higher community dissatisfaction, and residents feeling unsafe.

## What we measured

Housing affordability was measured according to housing stress and represents any household spending more than 30% of their household income on housing costs.

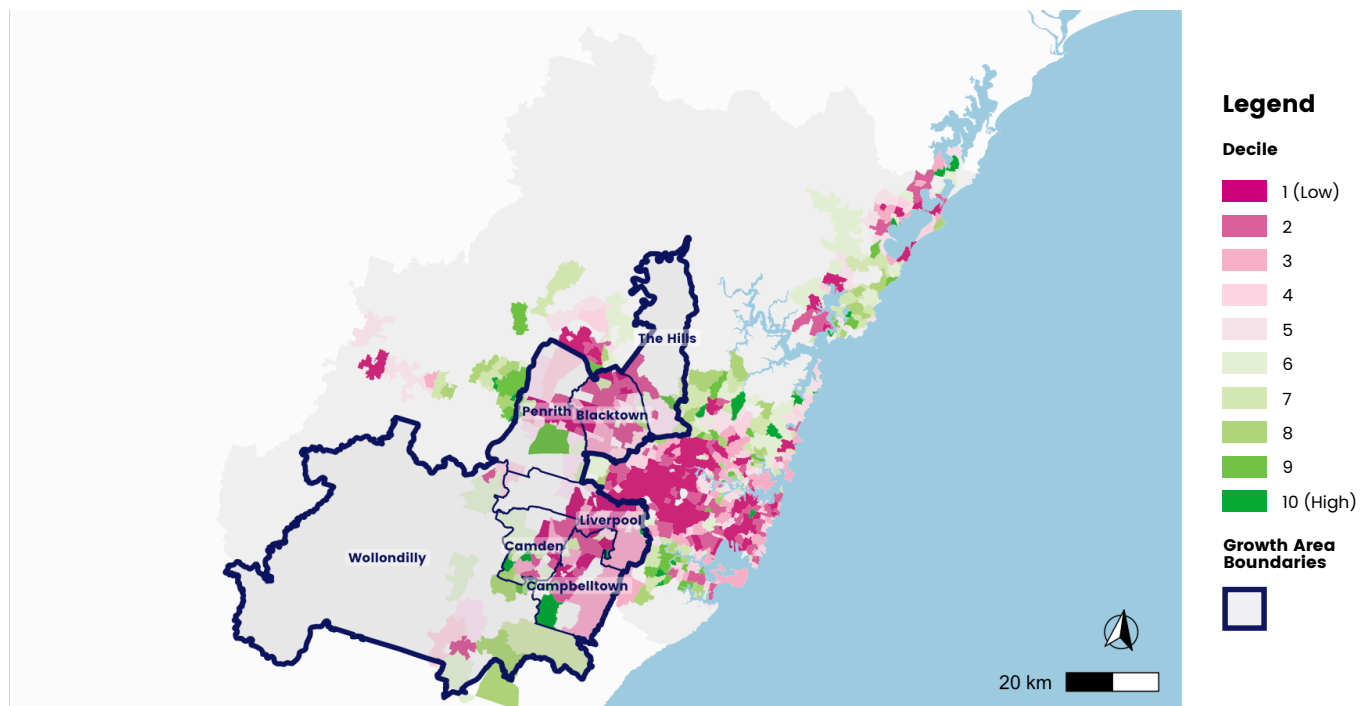


The percentage of households in Growth Areas of Sydney spending more than 30% of income on housing is

17%.

This is similar to the Sydney city average of 18% while the non-growth areas average is lower at 18%.

**Figure 10. Percentage of households under housing affordability stress across Sydney at suburb level highlighting Growth Area Local Government Areas.**



Data: Australian Bureau of Statistics (ABS), 2021 under CC BY 4.0  
Map tiles: CartoDB, under CC BY 3.0, featuring data by OpenStreetMap, under ODbL.



# Summary for Sydney

Indicator		Brief Description	Value	Difference between Growth and Non-Growth Areas	
Liveability Index		Liveability Index	97	●	Similar*
Social Infrastructure Index		Social Infrastructure Index	4 destinations	▼	Worse
Health Infrastructure		Health facilities and services	1 destination	▼	Worse
Cultural Infrastructure		Cultural Destinations	0.4 destinations	▼	Worse
Education Infrastructure		Educational facilities	2 destinations	▼	Worse
Community and Sport Infrastructure		Community and sport facilities	0.1 destinations	▼	Worse
Walkability Index		Walkability Index	see map	▼	Worse
Public Transport		Percentage living within 400m to regular public transport	63%	▼	Worse
Public Open Space		Percentage living within 400m of public open space of 1.5 hectares	40%	●	Similar*
Housing Affordability		Percentage of households spending more than 30% of income on housing	17%	●	Similar*

\* Similar = less than 10% difference between Growth Areas and non-growth areas.

# References

1. Badland, H., et al., Examining associations between area-level spatial measures of housing with selected health and wellbeing behaviours and outcomes in an urban context. *Health & Place*, 2017: p.17.
2. Lowe, M., et al., *Planning healthy, liveable and sustainable cities: How can indicators inform policy*. Urban Policy and Research. 2015. 33(2): p. 131–144.
3. Badland, H., et al., *Urban liveability: Emerging lessons from Australia for exploring the potential for indicators to measure the social determinants of health*. *Social Science & Medicine*, 2014. 111: p. 64–73.
4. Higgs, C., et al., *The Urban Liveability Index: developing a policy-relevant urban liveability composite measure and evaluating associations with transport mode choice*. *Int J Health Geogr*, 2019. 18(1): p. 14.
5. Hooper, P., et al., *The building blocks of a 'Liveable Neighbourhood': Identifying the key performance indicators for walking of an operational planning policy in Perth, Western Australia*. *Health and Place*, 2015. 36: p. 173–183.
6. Boulange, C., et al., *Examining associations between urban design attributes and transport mode choice for walking, cycling, public transport and private motor vehicle trips*. *Journal of Transport & Health*, 2017. 6: p. 155–166.
7. Zapata-Diomedí, B., et al., Physical activity-related health and economic benefits of building walkable neighbourhoods: a modelled comparison between brownfield and greenfield developments. *International Journal of Behavioral Nutrition and Physical Activity*, 2019. 16(1): p. 11.
8. Chandrabose, M., et al., Built environment and cardio-metabolic health: systematic review and meta-analysis of longitudinal studies. *Obesity Reviews*, 2019. 20(1): p. 41–54.
9. World Health Organization, *Global action plan on physical activity 2018–2030*. 2018: Geneva: Switzerland.
10. Davern, M., et al., Using spatial measures to test a conceptual model of social infrastructure that supports health and wellbeing. *Cities & Health*, 2017. 1(2): p. 194–209.
11. Giles-Corti, B., et al., The influence of urban design on neighbourhood walking following residential relocation: Longitudinal results from the RESIDE study. *Social Science & Medicine*, 2013. 77: p. 20.
12. Evans, G., The built environment and mental health. *Bulletin of the New York Academy of Medicine*, 2003. 80(4): p. 536–555.
13. Gunn, L., et al., Designing healthy communities: creating evidence on metrics for built environment features associated with walkable neighbourhood activity centres. *The International Journal of Behavioral Nutrition and Physical Activity*, 2017. 14(1): p. 164.
14. Badland, H., et al., Public transport access and availability in the RESIDE study: Is it taking us where we want to go? *Journal of Transport & Health*, 2014. 1(1): p. 45–49.
15. De Gruyter, C., et al., Exploring changes in the frequency of public transport use among residents who move to outer suburban greenfield estates. *Case Studies on Transport Policy* 10, no. 1 (2022): 341–353.
16. Rachele, J.N., et al., Are Measures Derived From Land Use and Transport Policies Associated With Walking for Transport? *Journal of Physical Activity & Health*, 2018. 15(1): p. 13–21.
17. Department of Infrastructure, Transport, Cities and Regional Infrastructure. National Cities Performance Framework. Available from: <https://smart-cities.dashboard.gov.au/all-cities/overview>.
18. Davern, M., et al., *Quality Green Space Supporting Health, Wellbeing and Biodiversity: A Literature Review*. 2016, University of Melbourne (Melbourne, Australia).
19. Sugiyama, T., et al., Associations between recreational walking and attractiveness, size, and proximity of neighborhood open spaces. *American Journal of Public Health*, 2014. 100(9): p. 1752.
20. Francis, J., et al., Quality or quantity? Exploring the relationship between Public Open Space attributes and mental health in Perth, Western Australia. *Social Science & Medicine*, 2012. 74(10): p. 1570–1577.
21. Badland, H., et al., Are Area-Level Measures of Employment Associated with Health Behaviours and Outcomes? An International and Interdisciplinary Journal for Quality-of-Life Measurement, 2017. 134(1): p. 237–251.
22. Frank, L.D., M.A. Andresen, and T.L. Schmid, Obesity relationships with community design, physical activity, and time spent in cars. *American Journal of Preventive Medicine*, 2004. 27(2): p. 87–96.
23. Brackertz, N., J. Davidson, and A. Wilkinson, Trajectories: the interplay between mental health and housing pathways, a short summary of the evidence, report prepared by AHURI Professional Services for Mind Australia, Australian Housing and Urban Research Institute. 2019: Melbourne.
24. Yates, J. and Gabriel M., Australian Housing and Urban Research Institute. Housing affordability in Australia: Collaborative research venture 3: Housing affordability for lower income Australians: Background report. 2005.
25. id (2022). *State of Australia's Growth Areas: Population and Housing Supply*. Report prepared for the National Growth Areas Alliance. [https://ngaa.org.au/application/third\\_party/ckfinder/userfiles/files/State%20of%20Australia's%20Growth%20Areas%20-%20Population%20growth%20REPORT.pdf](https://ngaa.org.au/application/third_party/ckfinder/userfiles/files/State%20of%20Australia's%20Growth%20Areas%20-%20Population%20growth%20REPORT.pdf)





